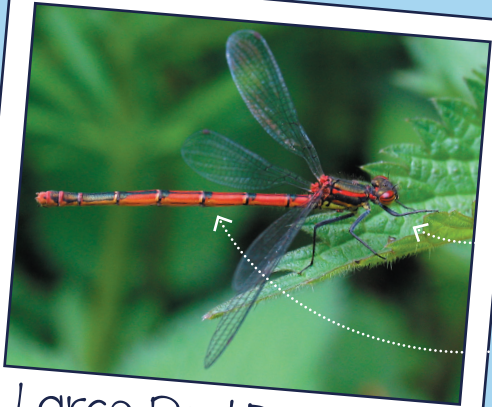


Damselflies of the Garden

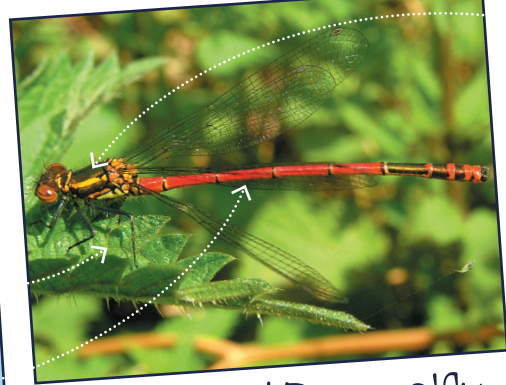
Female Large Red Damselflies can have different amounts of black on the body; sometimes it is nearly all black! Some female and immature Large Red Damselflies also have a yellow stripe on the thorax. This species is the first to appear, flying from April to August.



Large Red Damselfly
(female)

black
legs

red body
with
black
markings



Large Red Damselfly
(male)

yellow
stripe

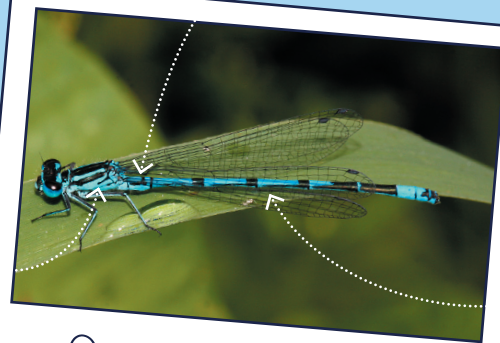
Azure Damselflies rarely fly over large stretches of open water. They fly between May and August.



Azure Damselfly
(female)

green
or blue
body
with
black
marks

short
black
stripe

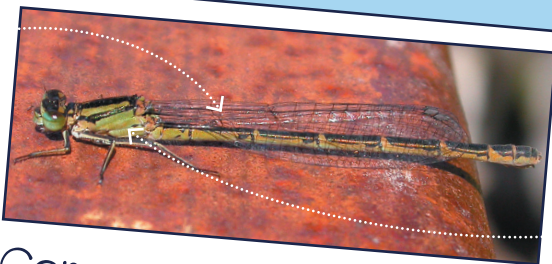


Azure Damselfly
(male)

blue
body
with
black
marks

U-shaped black
mark

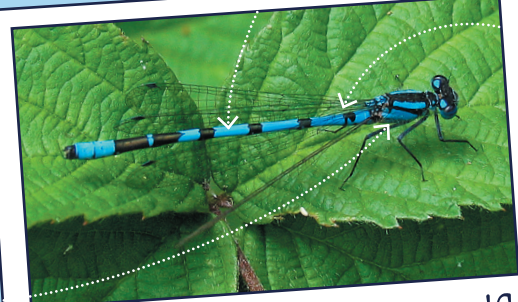
The Common Blue Damselfly flies between May and September.



Common Blue Damselfly
(female)

green
or blue
body
with
black
marks

no
black
stripe



Common Blue Damselfly
(male)

black
ball-on-
stick
shape

blue body with
black marks

